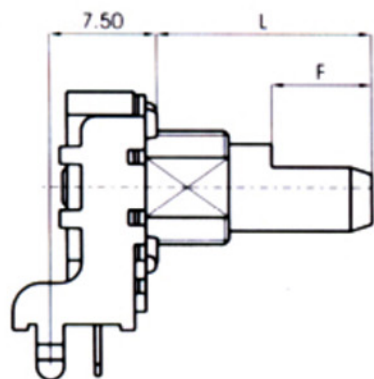


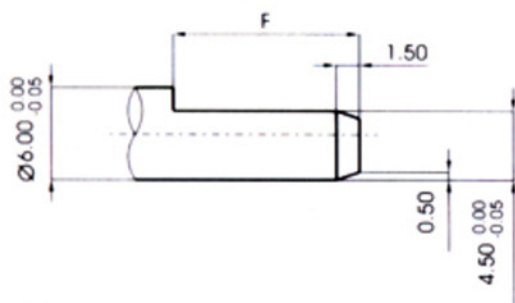
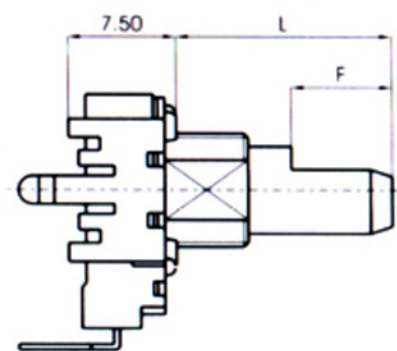
Type of shaft: 軸的型式 :

Without bushing 無軸套

Horizontal



Vertical

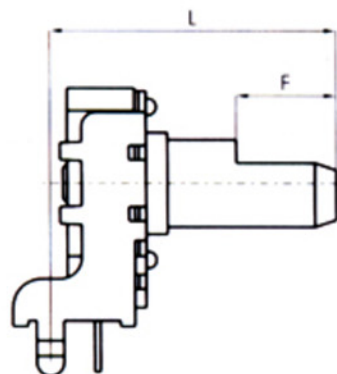


F TYPE:

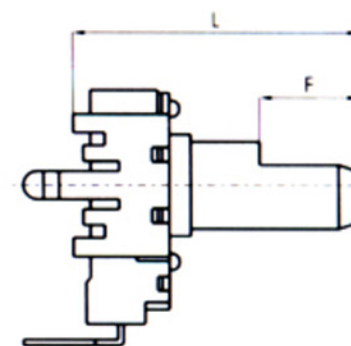
X	G	A	H	B	J	C	K	D	
L	12.5	15	17.5	20	22.5	25	27.5	30	
F	7	7	12	12	12	12	12	12	

With bushing 有軸套

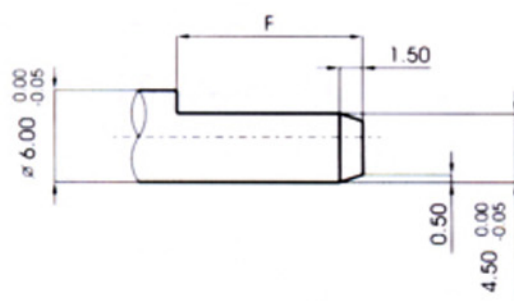
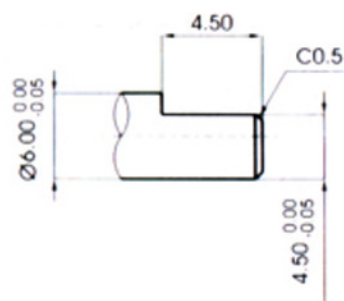
Horizontal



Vertical



* only 15F

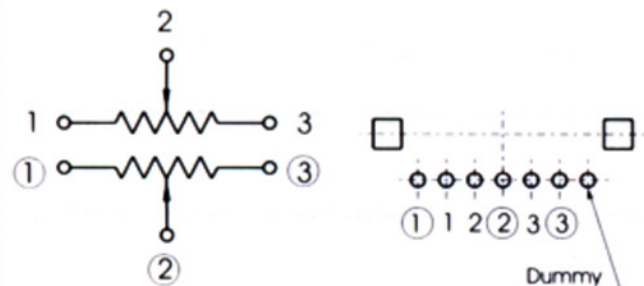


F TYPE:

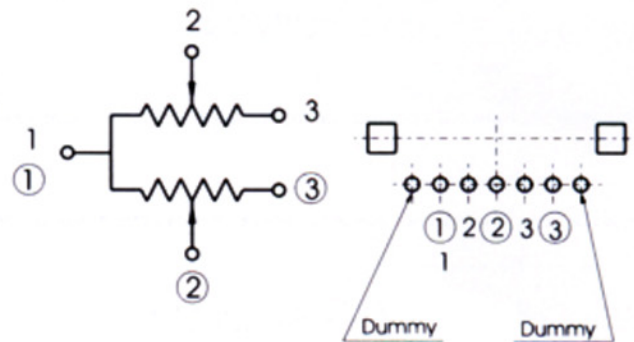
X	A	B	C	D	E				
L	15	20	25	30	35				
F	4.5	7	12	12	12				

Circuit explanation 電路說明

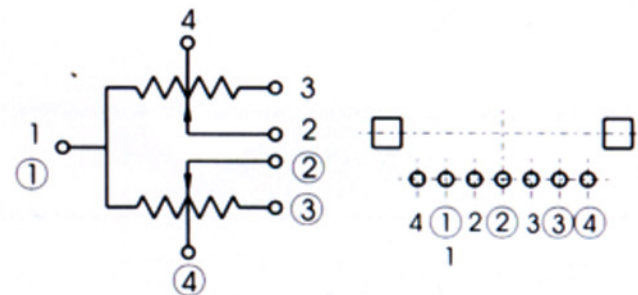
G



H



Y



Mechanical characteristics: 機械的性能:

Total rotational angle 總旋轉角度	300° ± 5°	
Rotational torque 旋轉力矩	2 ~ 20mN.m (20 ~ 200gf.cm)	
Rotation stopper strength 止擋強度	Without bushing 無軸套	0.5N.m(5kgf.cm)
	With bushing 有軸套	0.6N.m(6kgf.cm)
Push pull strength 軸推拉強度	80N(8kgf)	
Shaft lever wobble 軸搖晃	0.7*L/30mmp-p MAX.	

Electrical characteristics: 電氣的性能:

Total resistance 總阻值	5K Ω -2M Ω	
Total resistance tolerance 總阻偏差	$\pm 20\%$ more than 1M Ω $\pm 30\%$	
Rated power 額定功率	0.05W	
Max. operating voltage 最高使用電壓	50V AC/20V DC	
Resistance taper 阻值規律	A , B , C , MN	
Residual resistance 殘留阻值	$R \geq 250K \Omega$ 0.1% max. of total resistance $10K \Omega < R < 250K \Omega$ 20 Ω max. $R \leq 10k \Omega$ 10 Ω max.	
Slide noise 滑動噪音	less than 100m V	
Insulation resistance 絕緣電阻	more than 100M Ω at DC 250V	
Gang error 同步誤差	for volume control 音量用	-40 to 0 dB $\leq \pm 3$ dB
	for tone control 音質用	at center dB $\leq \pm 2$ dB

Durability:耐久的性能:

Rotational life

旋轉壽命

10,000 cycles