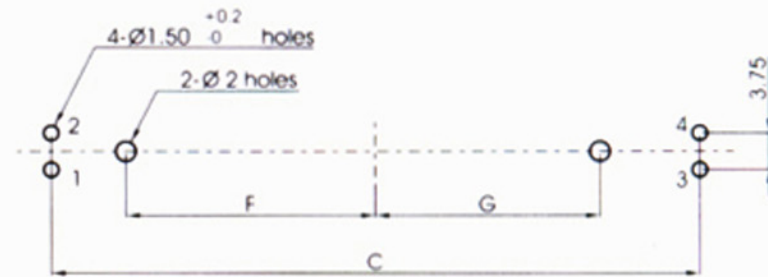
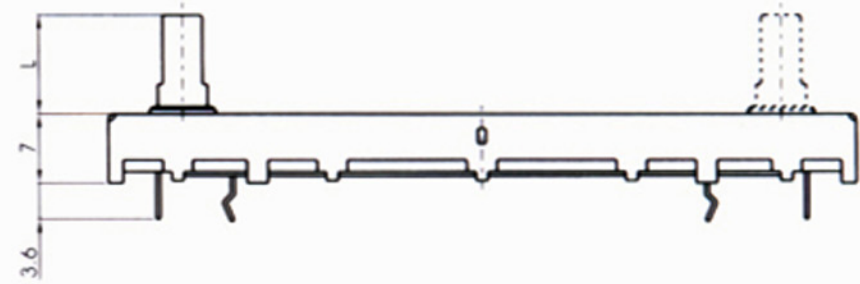
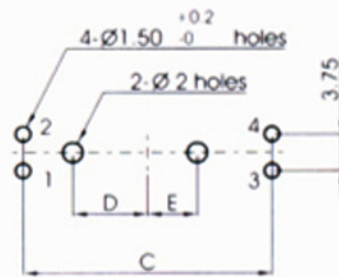
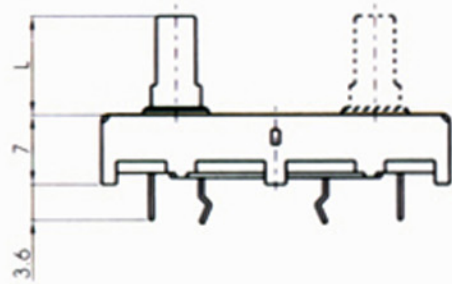


P.C.B. MOUNTING HOLE DETAIL



MODEL	T	A	B	C	D	E	F	G	Snap terminal style
C2043N	20	35	31	25	7.5	5	/	/	
C3043N	30	45	41	35	12.5	10	/	/	
C4543N	45	60	56	50	17.5	15	/	/	
C6043N	60	75	71	65	/	/	25	22.5	

LEVER TYPE

MATERIAL	Metal lever																
LEVER TYPE	CH1				D1				C1				B1				
DIMENSIONS																	
LENGTH(L)	X	M			X	P	Q	R	X	A	B	C	D	E	X	H	I
	L	10 4			L	10	15	20	L	10	15	20	25	17.3	L	10	15
	F	7			F	7	10	10	F	7	10	10	10	10			

MATERIAL	Insulated lever											
LEVER TYPE	C				B				D			
DIMENSIONS												
LENGTH(L)	X	1	3		X	5	6		X	7	8	9
	L	10	15		L	5	15		L	10	15	20

Mechanical characteristics:機械的性能：

Operating force 滑動力	0.2~2N (20 ~ 200gf)
Stopper strength 止擋強度	50N (5kgf) measuring point = 5mm
Lever wobble 柄的晃動	2 (2*L) / 20 mm max. (L:Lever length both side) L: 兩側柄長
Bending moment 瞬間彎曲	25mN.m (250gf.cm)
Push pull strength 軸推拉強度	30N(3kgf)
Click slip-out force c.c. 脫出力	0.2 ~ 2N (20 ~ 200gf)
Lever deviation 柄的偏心量	0.5max.(one side)單側

Electrical characteristics:電氣的性能：

Total resistance 總阻值		5K Ω ~2M Ω						
Total resistance tolerance 總阻偏差		$\pm 20\%$ more than 1M Ω $\pm 30\%$						
Resistance taper 阻值規律		A, B, C, D, K, W, RD						
Insulation resistance 絕緣電阻		100M Ω min. at 250V DC.						
Withstand voltage 耐電壓		AC 300V (1 minute)						
Rated power 額定功率 (W)	Travel Taper		15 mm	20 mm	30 mm	45 mm	60 mm	
	B	Single	0.05	0.1	0.2	0.25	0.2	
		Dual	0.025	0.05	0.1	0.125	0.2	
	Except B (B 以外)	Single	0.025	0.05	0.1	0.125	0.1	
		Dual	0.012	0.025	0.05	0.06	0.1	
Max. operating voltage(AC V) 最高使用電壓	B	Single	100	200	200	200	200	
	Except B (B 以外)	Dual	50	150	150	150	150	
Residual resistance 殘留阻值	Total resistance 總阻值		10K Ω	50K Ω	100K Ω	200K Ω	500K Ω	1M Ω
	Between terminals 1-2 端子 1-2 間		10 Ω	10 Ω	10 Ω	20 Ω	20 Ω	20 Ω
	Between terminals 2-3 端子 2-3 間		10 Ω	10 Ω	20 Ω	20 Ω	50 Ω	50 Ω

Durability:耐久性能:

Slidinglife

滑動壽命

15,000 cycles