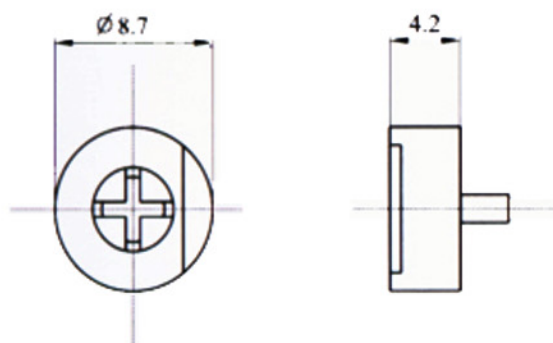
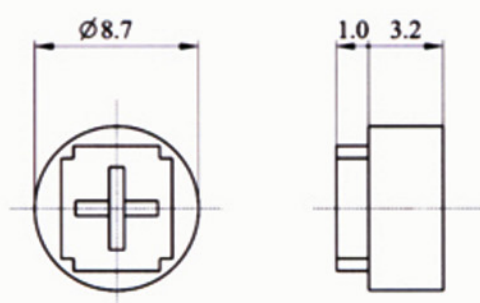


Dust - cover knob style:防塵鈕型式：

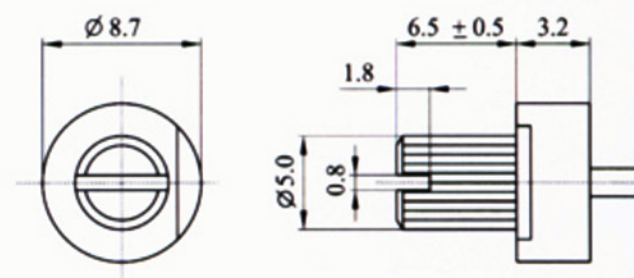
A Type



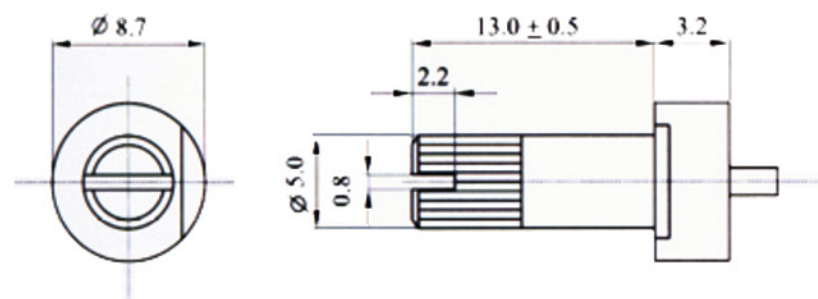
B Type



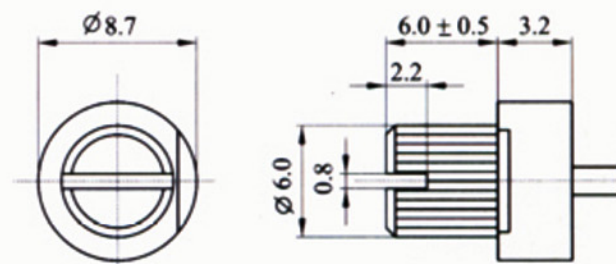
C Type



D Type



E Type



Mechanical characteristics: 機械的性能:

	Carbon 碳膜(SR)	Metal glaze 金屬膜玻璃軸(SC)
Rotation angle 旋轉角度	$260^{\circ} \pm 10^{\circ}$	$260^{\circ} \pm 10^{\circ}$
Rotation torque 旋轉力矩	5 ~ 35mN.m (50 ~ 350gf.cm )	5 ~ 35mN.m (50 ~ 350gf.cm )
Stopper strength 止擋強度	50mN.m ( 500gf.cm )	100mN.m ( 1Kgf.cm )

## Electrical characteristics:電氣的性能：

	Carbon 碳膜 (SR)	Metal glaze金屬膜玻璃軸(SC)
Total resistance 總阻值	200 $\Omega$ ~1M $\Omega$	200 $\Omega$ ~1M $\Omega$
Total resistance tolerance 總阻偏差	$\pm 30\%$	$\pm 20\%$
Resistance taper 阻值規律	B	B
Rated power 定額功率 (W)	0.1W (at50 $^{\circ}$ c)	0.5W (at50 $^{\circ}$ c)
Max. operating voltage(AC V) 最高使用電壓	100V	100V
Residual resistance 殘留阻值	R $\leq$ 1K $\Omega$ : 30 $\Omega$ max. R>1K $\Omega$ : 3%max.	R $\leq$ 1K $\Omega$ : 30 $\Omega$ max. R $\geq$ 1K $\Omega$ : 3%max.

Durability:耐久的性能:

		Carbon 碳膜 (SR)	Metal glaze 金屬膜玻璃軸 (SC)
Soldering heat 耐熱性		250 °C,3s	260 °C,5s max
Humidity 耐濕特性	40 ± 2°C 90% ~ 95% RH	After 350h ± 15% ~ 0%	After 500h ± 5%
Operation life 使用壽命		100 Turns	50 Turns